

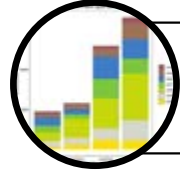


Our Mission



Conservation

Conservation through research, education and advocacy.



Science

To gather information about avian communities and habitat use that will assist state, federal, and private natural resource managers in their efforts to implement conservation programs.



Education & Outreach

To provide opportunities for people of all ages to learn about species and their habitats.



Advocacy

To advocate for sound, science-based conservation policies that benefit birds, other wildlife and environmental quality.

FY2021 Full-time Staff



Dana Ripper Duke & Ethan Duke
Founders/Directors
Marshall, MO



Erik Ost
Field Project Leader
El Dorado Springs, MO



Paige Witek
Education Coordinator
Arrow Rock, MO



Zeb Yoko
Conservation Science Communicator
Chillicothe, MO

Board of Directors

Whitney Kerr Jr., Chairman
Kansas City, Kansas

Diane Benedetti,
Fundraising Chair
Marshall, Missouri

David Pearce, Vice-Chairman
Warrensburg, Missouri

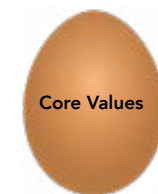
Leslie Huston
Marshall, Missouri

Michele Reinke, Secretary
Malta Bend, Missouri

Doug Doughty
Chillicothe, Missouri

Steven Byers, Treasurer
Nevada, Missouri

Theresa Enderle
Independence, Missouri



- Robust data and scientific integrity
- Time- and cost-efficiency and use of technological innovations
- Fostering the formation of partnerships
- Embracing and encouraging equity, diversity and inclusion
- Empowering and providing opportunities for young people

Highlights of FY2021



7th year of Missouri wetland bird survey project

9th year of Missouri grassland bird surveys and 6th year of nest-monitoring

Return to bird monitoring in eastern Kansas

>30 presentations on MRBO's data

Science

Significant expansion in membership and geography of Missouri Young Birders Club

4th year of the Young Explorers' Club summer day camp

>20 virtual classes presented to central Missouri elementary students

>80 public programs conducted

Education

Hosted an intensive community advocacy workshop for Missourians and Kansans

Established plastic brand audits to document the primary sources of trash in the Missouri River

Extensive outreach to property managers across the Kansas City metro regarding bird/window collisions

Worked with partners to expand opportunities for local, sustainable family farms

Advocacy

Like many organizations, the period of 2020-2021 was often challenging, sometimes eventful, and occasionally joyous for the Missouri River Bird Observatory. By the fall of 2020 we had re-established many of our outdoor programs and events as well as reinstating travel for the field project crews. All of this was in addition to on-going virtual meetings and programs, which made for a very busy and productive fiscal year. The MRBO board, full-time staff, volunteers, and seasonal biologists and educators all worked very hard to ensure the organization's success in a time of change. We have been able to maintain the quality of existing science, education and advocacy programs while developing several significant expansion opportunities.

Our Pandemic Anniversary



MRBO celebrated its 10th Anniversary in September 2020. We had of course planned a big party at our headquarters in Arrow Rock, but like many things, that plan was thwarted by the pandemic. Instead, we had fun hosting an online event to which the whole staff contributed video clips, photos, memories, and commentary. We are looking forward to a really big celebration for our 20th!



Paul Mofett



Science

MISSION: To contribute to conservation by gathering information about avian communities and habitat use that will assist state, federal, and private natural resource managers in their efforts to implement conservation programs.



MRBO has continued its avian monitoring projects throughout FY2021. Many of these projects are generating long-term datasets that track fluctuations in bird populations in response to management and other landscape variables. MRBO works in two of the most imperiled ecosystems of Missouri and eastern Kansas - emergent marsh wetlands and native grasslands. Data are provided to land owners, both public and private, to assist in the assessment of management results. We harness our database of over 500,000 bird detections to provide specific management recommendations to wetland and prairie landowners. Several funding partners support MRBO's programs.



2020-2021 Research & Monitoring Reports

Available at <https://mrbo.org/mrboreports/>



FIELD SEASONS: FALL 2020 and SPRING/SUMMER 2021

Wetland Bird Surveys

MRBO surveys private properties enrolled in the Wetland Reserve Easement Program. In 2021, we surveyed:

- Bootheel region: 19 sites
- Southwest region: 16 sites
- Northwest region: 16 sites
- Northeast region: 19 sites

Over 90 wetlands throughout the state have been surveyed, many in multiple years, since this project began in 2014. The data from all sites is being spatially and statistically analyzed as part of the NRCS's Conservation Effects Assessment Program.



Grassland Bird Surveys

MRBO surveys both public and private grassland sites in partnership with several agencies and fellow NGOs. In 2021 we surveyed:

- 36 public areas
- 12 privately-owned properties

We also conduct an intensive nest-monitoring program at southwestern Missouri's Wah'Kon-Tah and Taberville Prairies.

MRBO's FY21 Seasonal Biologists



Joseph Mosley



Alex Marine



Trey McCuen



Josh Mosteller



Davis Balsler



Matt Longabaugh

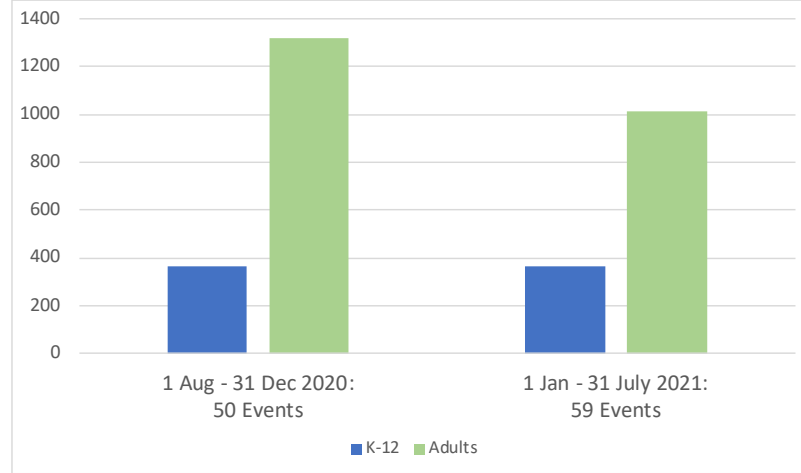




Education

MISSION: To contribute to conservation by providing opportunities for people of all ages to learn about native species and their habitats.

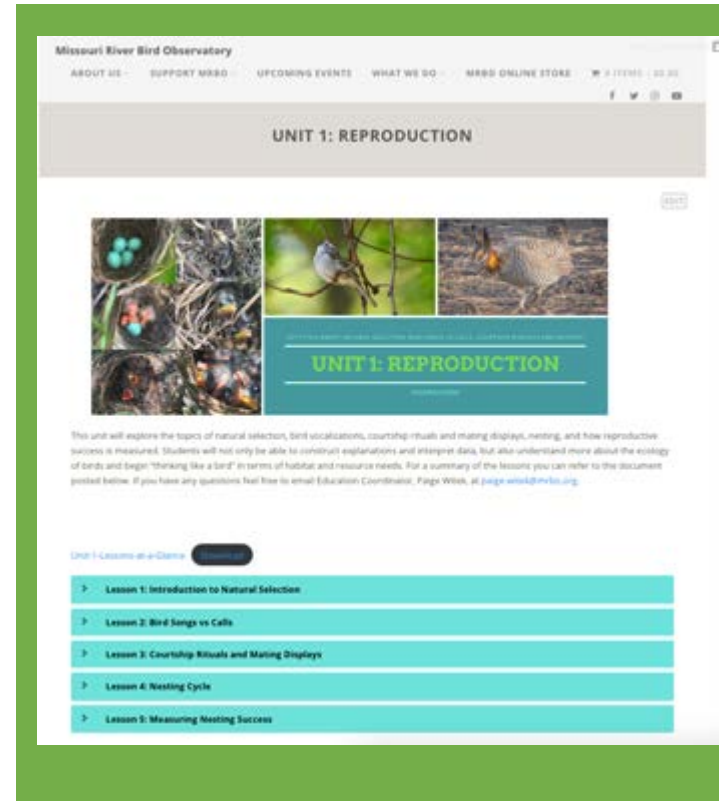
Reach of MRBO's education programs in FY21



Peers Prairie, July 24th, 2021



In person: June 7th - 11th and June 21st - 25th, 2021
At home: July 12th - 22nd, 2021



In partnership with the Missouri Department of Conservation, over the winter of 2020-2021 MRBO education staff developed an extensive series of lesson plans for elementary school students. Each lesson is a complete package of readings, activities, quizzes, and discussion materials. These resources can be used by teachers in either a virtual or in-classroom setting. We will continue development of these unique, nature-focused lessons this year. The lesson plans are free to all and available on the MRBO website at: <https://mrbo.org/virtualnatureschool/>

MRBO's FY21 Seasonal Educators



Pammi Price



Evelyn Kirtley



Virtual: May 6th-8th 2021
In Person: May 8th



Place-based Nature Education



Virtual programming

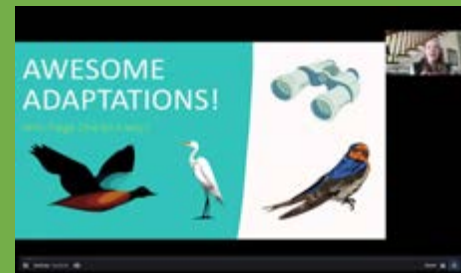
>40 Webinars



Live-streamed banding



School classes





Advocacy

MISSION: To contribute to conservation by advocating for sound, science-based conservation policies that benefit birds, other wildlife and environmental quality.

Reducing bird collisions with windows



Fall 2020 and Spring 2021 were the fourth and fifth seasons of the BirdSafeKC project. A team of dedicated volunteers surveys more than 20 buildings throughout the Kansas

City metro area for the carcasses of birds that have hit windows. We record the exact window column where the bird struck, thus allowing us to determine which areas of buildings are problematic. Surveys take place throughout the Financial District, at Crown Center, near Country Club Plaza, and at several locations on the outskirts of the city.

Over the course of the past year we have made significant progress in discussions with building owners, property management companies, and the



City of Kansas City. We have communicated the problem of avian window collisions to these entities and are working with them on cost-effective solutions for the most strike-prone windows. The lower-right photo shows a reflective window that was the site of a collision.

Bird-friendly Agriculture



Dave Rintoul



MRBO has been working with farmers, ranchers and other conservation partners since 2012 on improving agricultural production methods to benefit birds. Some of this work has been done with programs such as the Audubon Conservation Ranching (ACR) program, which certifies ranches as bird-friendly. MRBO performs the bird surveys on ACR ranches to generate the avian population data that put numbers behind the claim of bird-friendliness.

In a new partnership, MRBO is working with the Missouri Coalition for the Environment (MCE) to expand MCE's Known & Grown St. Louis program. The program provides marketing support that connects consumers with local, ecologically ethical producers that incorporate soil, water, and wildlife sustainability practices. Over the next three years, MRBO, MCE and other regional partners will bring the Known & Grown program to central Missouri and the Kansas City region!

Reducing Plastic

Single-use plastics have become a critical conservation issue. From material extraction to production to waste, plastic is environmentally damaging in every stage of its life-cycle. Plastic reduction has even been cited by Cornell University et al. as one of the seven most important things we can do to help birds. MRBO has adopted plastic reduction as one of its top advocacy goals.

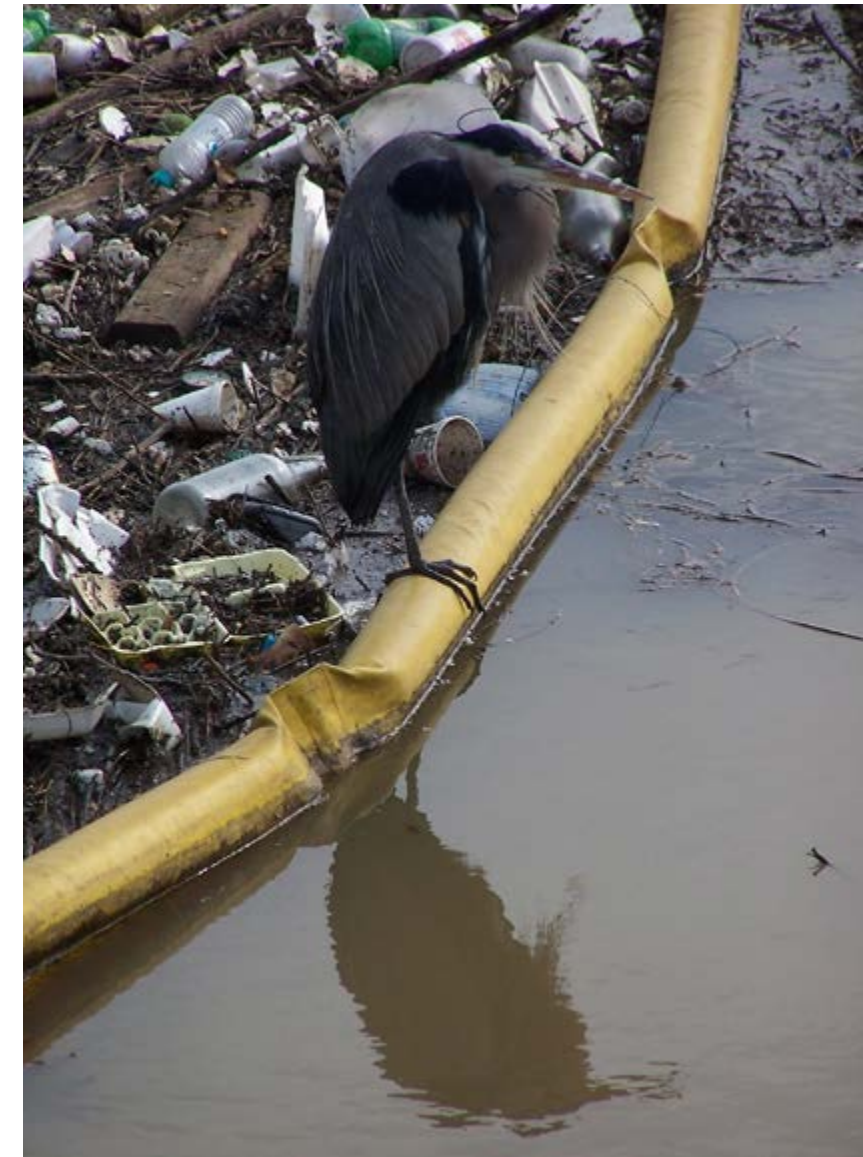


MRBO Director Dana Ripper recently received certification with the organization Beyond Plastic, and is part of a volunteer Speakers' Bureau that gives invited presentations on this topic.

In addition to informing people about the various aspects of plastic problems and solutions via various media, we are hosting community events called Plastic Brand Audits. With our partner Missouri River Relief, we will audit the plastic waste collected during a Missouri River clean-up and collect data identifying the sources. This helps national and global advocacy coalitions hold producers accountable for unnecessary packaging and its harmful waste.



Trash Hero 2020 Audit



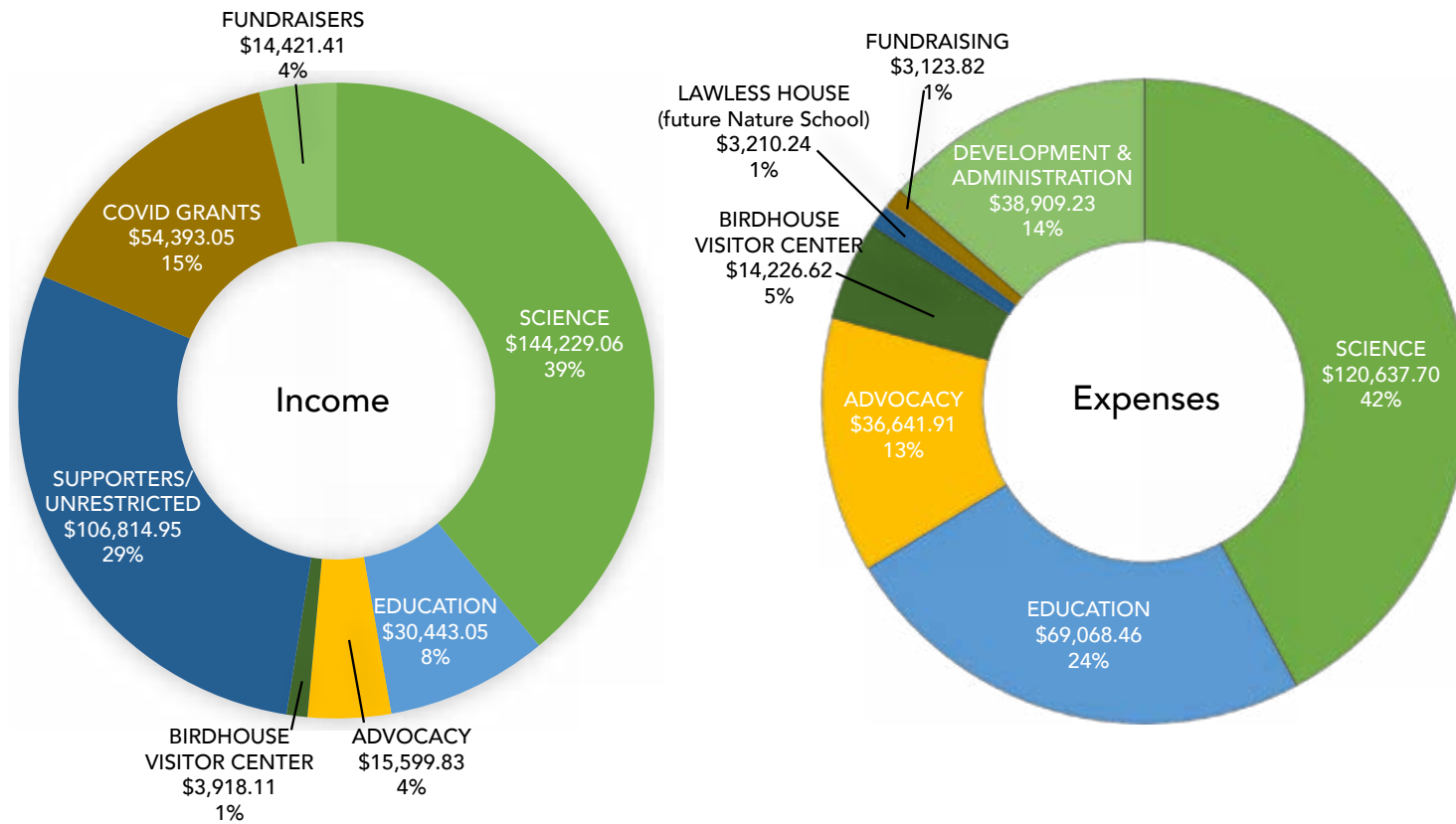
Critical Conservation Partnerships

MRBO works with many other organizations across Missouri and nationally to form effective advocacy coalitions. We serve in various capacities on working groups and organizational boards that work to promote conservation policy and encourage community action. Examples of this include having a presence on the the Diversity, Equity and Inclusion working group of the National Wildlife Federation and the legislative policy committee of the Conservation Federation of Missouri.

In October 2020, MRBO worked with the Campaign Team of the National Audubon Society and longstanding partners in Missouri to present a two-day workshop for community advocates. This was followed by several virtual trainings and meetings focused on specific conservation issues. These represent just a few of the coalition activities of which MRBO is a part.



FY2021 Finances



Our Thanks to MRBO's Supporters

ORGANIZATIONS & COMPANIES

- AGRI Services of Brunswick
- Anderson-Rogers Foundation
- Athlon Optics
- Birds-I-View
- Burroughs Audubon Society of Greater KC
- Experience Arrow Rock
- Esser Hayes Insurance Company
- Magnificent Missouri
- Missouri Birding Society
- Missouri Master Naturalists - Boone's Lick Chapter
- Missouri Prairie Foundation
- National Wildlife Federation
- River Bluffs Audubon Society
- Warren & Denise Loveland Family Fund
- Wood & Huston Bank



Paul Moffert

INDIVIDUALS & FAMILIES

- | | | |
|----------------------------------|------------------------------------|----------------------------------|
| Krystal Anton & Steve Huey | Randy Haas | Marc & Diane Prigmore |
| Margie Bauer | Tom & Margaret Hall | Jordanya Raos |
| Kimberly Becker-Yoko | Norma Thaxter Hamm & Rich George | Paul & Kim Ratcliffe |
| Sarah Beier Hobbs | Susan Hazelwood | Sarah & David Read |
| Alpha Benedetti | Kelee & Steve Heiffus | Andrew Reago & Chrissy McClaren |
| Diane Benedetti | Klaire & Caleb Howerton | Lynn Richardson |
| Lisa Berger & Charley Burwick | Donna & John Huston | Steve Rinne |
| Joann Billington | Leslie & Nick Huston | Grant & Linda Ripper |
| Toni & George Blackwood | Steve Johnson | Laura Robinson |
| Deb Booker | Sue Kelly | Nic Salick |
| Kathy Borgman | Sarah Kendrick | Sara Scheil |
| Kalen Brady | Whitney & Debbie Kerr | Steve Schnarr & Mel Cheney |
| Chet Breitwiser & Rodney Stearns | Joanna Klass | Sandy & Marty Selby |
| Steve & Anita Byers | Katie Kurtz | Katie Shannon |
| Jeff Cantrell | Lara Landrum | Ed Smith |
| Tina Casagrand | Nicole LaPlante | Kelly Smith |
| Myra & Truman Chrisotopher | Katie Leonard | Karen & Terry Stair |
| Theresa Cline | Jean Leonatti | Shanna & Ryan Steitz |
| Georgana Cochran | Charles & Susan Linn | Jason Swanson |
| Jamie Coe | Ev Luecke | Bill & Jennifer True |
| Kate Corwin | Alie Mayes | Tom Tucker & Tina Yochum Magaz |
| Jerry Crouse | Veronica Mecko | Dianne Van Dien & Don Sheldon |
| Dan Curran | Bill & Jan Mees | Mark VanderVen |
| Carol Davit & Mike Leahy | Karen Meyer | Lyn Vreeland |
| Meredith Donaldson | Stephanie Michels & Everett Stokes | Neil & Gail Vreeland |
| Mandy Dorrance & Bruce Satterlee | Edward Milbank | Valerie Vreeland & Charlie Yazak |
| Doug Doughty | Karen Miller | Edge Wade |
| Susan Dyer | Bill Moran | Lee Walter |
| Ann Earley | Wayne Morton | Jim & Timmie Wiant |
| Theresa Enderle | Ryan & Suzanne Motter | Brooke Widmar |
| Bob Estes | Jan Neale | Rad Widmer |
| Andy Forbes | Mary Nemecek | Mary Wight-Carter & Bart Carter |
| Elizabeth Fuemmeler | Donnie & Kim Nichols | Linda Williams |
| David Galat | Laura & Phillip Ost | Terrie Woodsmall |
| Steve & Regina Garrs | David & Teresa Pearce | Suzanne & Brad Wright |
| Anthony Gawienowski | Catherine Peer | Mark Zurbrick |
| Mark Gregory | Bob & Pat Perry | |
| Shelby Gregory | Amy Petersen | |





P.O. Box 16
Arrow Rock, MO 65320
660.837.3888
<https://mrbo.org>

NONPROFIT
MARKETING MAIL
U.S. POSTAGE PAID
PI 17
MARSHALL MO
65340

